

AAW 2006



**Pack your bags,
it's time to head to**

Louisville

**Don't miss one turn of the
lathe June 22–24 at the
AAW National Symposium**

Whether you say *Looavul*, *Luhvul*, *Loueville*, *Looaville*, or *Looeyville*, the place to be June 22–24 is Louisville, Kentucky, for the AAW's 20th Annual National Symposium. You've made your reservations, right? If not, get busy!

The symposium committee has lined up more than 150 demonstrations to entice you. You don't want to miss any of the 900-plus pieces expected for the Instant Gallery. As a special treat, there are three incredible woodturning exhibits within four blocks of the symposium site.

If there ever were a year to make a special effort to attend, this would be it. Here's an overview of all the major events, including the 120 rotations.

For more details, see woodturner.org.



National Symposium

3 DAYS • 30 DEMONSTRATORS • 120 ROTATIONS

“There are no secrets in woodturning”



- Saturn Box
- Drunken Box
- Box With Pierced-Through Lid

“With my pierced-through box, I show how to turn this piece and how the out-of-center chuck works. I cut grooves from both sides until they meet in the middle of the wall thickness. Holes appear, and if it doesn’t break, you can see a nice pattern.”

—Hans Weissflog, Germany



See how nature can inspire your turning



- Turn an Erosion Bowl
- Turn a Tree Plate

“We all see trees every day; we use them to build and enjoy turning them. If you come and watch this demonstration, you will see how tree images can inspire you to go home and turn and carve your own tree platter.”

—Neil Scobie, Australia

Learn a new way to think about turning



- Creating With Turned Forms
- Adding Texture and Color to Turned Objects
- Bases, Stands, and Presentation

“There’s a whole new way to think of lathe-turned forms. I’ll demonstrate how to make several objects created by cutting apart forms generated on the lathe. Join me to discover creative ways to present your work.”

—Betty Scarpino, Indiana

INCREDIBLE!

**Win one of five Oneway 2436 lathes
Packard donates fifty \$100 gift certificates**

Feeling lucky? Here are even more wow! reasons to attend this year’s symposium in Louisville.

All fully paid symposium participants will be eligible to win one of five Oneway 2436 lathes (retail value \$5,645; includes standard equipment and shipping up to \$400) to be given away at Friday night’s banquet.

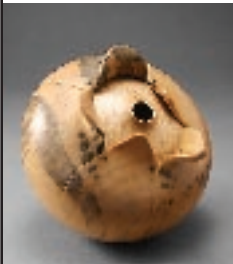
In addition, a special drawing will include fifty \$100 gift certificates donated by Packard Woodworks.

We can’t wait to see what lucky members will win new equipment for their shops.



Trent Bosch & Allen Jensen, Colorado

- Hollow Turning in Depth
- Utility Bowls in Depth



“We will present everything you ever wanted to know about bowls and hollow forms in a fun, informal atmosphere. Trent will discuss all the details of the

processes while Allen demonstrates the techniques, allowing them to cover the topics in depth. This is a demo you won't want to miss!”

Andrew Brown, Kentucky

- Demos in Classes
- Kitchen Projects



“Kitchen products bring joy to the user and cash to the turner. These projects will add a few proven sellers to any turner's line of products.”

Myron Curtis, Virginia

- Accurate Turning of Spheres Using Tangents
- Point-to-Point Repetitive Spindle Turning

“Come to my demo, and I'll show you a simplified aid for turning two or more identical spindles. We will emphasize speed, accuracy, and safety.”

Mike Darlow, Australia

- More Spindle Turning
- Faceplate Turning
- Spindle Turning

“I'll show you the finer points and less commonly used cuts in spindle turning. We'll focus on refining your techniques

to improve off-the-tool surfaces and minimize sanding.”

Cindy Drozda, Colorado

- Finial Box
- Metalworking for Woodturners



“I will try to demystify metalworking and bring the skills to all woodturners with a moderately equipped shop. This is where you can learn to make your own bandsaw blades, drill and tap holes to make jigs and fixtures, and successfully cut and finish metal parts. When you leave, you'll have sources for all the tools and materials used and a shopping list for equipping.”

J. Paul Fennell, Arizona

- Decorative & Sculptural Design
- Personal Creative Expression
- Turning Hollow Forms



“Want to develop a feel for forms? My rotation will show how to create hollow vessels, with an emphasis on finding the right form, using light to gauge wall thickness, and hollowing out with easily made tools.”

Jack Fifield, Kentucky

- The Basic Natural-Edge Bowl

“Join me in beautiful downtown Louisville for an animated discussion of design. How do we approach that log? Where are we gonna go with it? Most of all, let's make those shavings fly! And remember Rude Osolnik's words: ‘Your simple forms are your best forms.’”

Clay Foster, Texas

- Adaptations
- Multiple-Axis Vessel
- Figurative Art and the Turned Object



“From cave walls to teapots, the human figure and its components have been a recurring theme in art and craft. This session will begin with a survey of figurative art and how previous artists, craftsmen, and product designers have incorporated the human form and figurative elements into their work. Special attention will be given to primitive art and contemporary craft. This will lead into the use of figurative elements and the turned object.”

Giles Gilson, New York

- A Walk on the Wild Side
- Function, Aesthetics, and Common Sense

“This workshop is about understanding what the design process really is. Come and explore design how-to. I will show methods that lead to stronger aesthetics and more workable functionality in woodturning.”

Michael Hosaluk, Saskatchewan

- A Closer Look at Spindles
- Box-making With a Twist
- Design in Turning



“We will investigate various aspects of woodturning, with a focus on the vessel. Be sure not to miss the subtraction of materials.”

Greg Jensen, Ohio

■ Bowl Coring Made Easy



“Are you having trouble using your bowl-coring system? Let me take the mystery out of the process and make coring easy. I’ll also demonstrate

sharpening of coring knives and bowl gouges and discuss drying techniques for cored blanks.”

Morton Kasdan, Kentucky

■ Workshop Safety

“As a hand surgeon and woodturner, I want to do all I can to prevent injuries to my woodturning friends. Join me for a discussion of woodshop safety and emergency treatment of injuries.”

Richard Kleinhenz, New York

■ Basic Penturning

■ Designing and Building

Custom Pens

“If you tried slimline pens some years ago and got bored, look again. Today’s pens are a far cry from that! I’ll cover equipment, techniques, and a variety of pen styles, from ballpoint pens to fountain pens.”

Alan Leland, North Carolina

■ Three-Legged Stools

■ The Ultimate Lazy Susan



“My lazy Susans are known for their striking grain patterns. Come to this demo, and I will show you how to

make up two or more boards so that it’s difficult to see the joinery. I’ll also show you how to process the wood to ensure a flat and stable surface.”

GREAT PANEL DISCUSSIONS

“**Cultural Appropriation**,” J. Paul Fennell, moderator; Clay Foster, Binh Pho, Graeme Priddle, and Curt Theobald, panelists. A discussion on the use of icons, symbols, and aesthetics from other cultures in turning. This discussion will seek to raise the awareness of issues surrounding cultural appropriation and how artists use and are influenced by these symbols with sensitivity and understanding.

“**Woodturning’s Past, Present, and Future**,” J. Paul Fennell, moderator; David Ellsworth, Albert LeCoff, and Kevin Wallace, panelists. At the AAW’s 20th anniversary symposium, there’s no better time to discuss contemporary woodturning’s history, its present state, and things that are happening now that will affect its future.

“**Prior Art as an Inspiration**,” Giles Gilson, moderator; David Ellsworth and Kevin Wallace, panelists. The panel will focus on how artists can use prior art as a trigger for ideas that evolve into their own work. They will also discuss the importance of understanding the history of the art for inspiration as well as to strengthen the validity of your work.



J. Paul Fennell

Youth Turning Room

As part of the Youth Turning Program, the AAW will again offer free youth woodturning instruction in Louisville. The AAW will waive the \$245 registration fee (including the Friday banquet) for youth turners ages 10 through 17 when accompanied to Louisville by a registered adult AAW member. The youth must be registered by contacting the AAW office at 651-484-9094.

Each morning, Bonnie Klein will conduct a three-hour hands-on turning instruction for the youth. Spinning tops and carrot stick pins are on her project list for these beginner classes. In afternoon rotations, Nick Cook will conduct 90-minute hands-on projects featuring honey dippers and egg cups.

The Youth Turning Room will feature 25 brand-new turning stations donated by generous supporters: WMH Tool Group (JET Midi-Lathes on stands), Teknatool International (Nova Precision midi chucks and dead cup drive centers), Crown Tools (basic tool sets), Dust Bee Gone (safety goggles), and Woodcraft Supplies (face shields). At the Friday night banquet, a youth-only drawing will award the turning stations to 25 lucky participants. (Freight from Louisville will be the responsibility of the winners.)

This ambitious program will require at least 25 volunteer assistants in the Youth Turning Room during each rotation. If you’d like to help, please contact Bonnie Klein (bklein96@aol.com). This is your opportunity to change a life and help another generation of woodturners.

A separate table for youth participants will be set up in the Instant Gallery for them to “show their stuff.”

—John Hill, chairman of Chapters and Membership Committee



Bonnie Klein



Nick Cook

OUR BIGGEST TRADE SHOW EVER: 40+ EXHIBITORS

You won’t see a larger exhibit of woodturning equipment anywhere than at the AAW symposium. Be sure to reserve at least a couple of hours to walk among booths sponsored by all the major lathe manufacturers and more than a dozen wood vendors. You’ll also find booths dedicated to segmented software, sanding aides, and everything you could dream of owning for your woodturning shop. It’s more fun than an after-Christmas sale!

Mike Mahoney, Utah

- Utility Items for Your Kitchen
- Burial Urns With a Threaded Lid
- Nesting Bowls



“Here’s your chance to learn about the different tools for nesting bowls, including a

discussion on how to make your coring tool perform for you. And, of course, we’ll talk about scale and proportions.”

Stuart Mortimer, United Kingdom

- Introduction to Spiral Work
- Twisted Hollow Form
- Translucent Turning



“This will be twisted fun! I will show you how to make a triple twist on a thin-stemmed goblet. I will also show you how to turn and twist with a 12-bine spiral and turn a twisted finial. Join me.”

Michael Mocho, New Mexico

- Making Connections
- On-Lathe Textural Techniques



“Learn how to use both commercial and shop-made devices to quickly add a variety of textures and low-

tech ornamental effects to your work for contrast and detail. I’ll demonstrate the application of rotating spiral tools, chatter work, indexed drilling, embossing, faceting, and more.”

Christophe Nancey, France

- Making of a Seed Sculpture
- Making of a Vase With Pewter Inlay

“I will show you a beautiful way to inlay pewter into the natural cracks of burrs.”

Liam O’Neill, Ireland

- Journey to the Outside

“My slide lecture covers my development from a production turner to wood sculptor. The climax covers outdoor woodturning, its development, and examples of my recent work.”



Binh Pho, Illinois

- Piercing Technique on Thin-Wall Turning
- Airbrush Technique on Turning

“If you think your wood has its own beauty and needs no additional color, think again. Come to my demo, and you will never look at your bowl the same way again.”

Bob Rosand, Pennsylvania

- Christmas Ornaments
- Small Turning Projects

“Be sure to come to my demo of Christmas tree ornaments. In a short time, I’ll show you how to turn high-quality gift items from start to finish.”

Mark St. Leger, Virginia

- Rock-on Lidded Box on the Bias
- Screwing Around Lidded Box



“Learn how to turn a lidded box on the bias, which will rock gently. I will emphasize tool techniques and present options for mounting work.”

Linda Salter, California

- Assembly and Turning of Segmented Closed Forms
- Math-less Plans for Segmented Closed Forms

“If you follow some basic instructions and go step by step, a segmented bowl is not too difficult for most turners. My idea of a first segmented turning is a

closed form with 265 pieces and is suitable for beginners—yes, beginners!—or advanced segmenters. Learn some tricks to make it goof-proof.”

Craig Timmerman, Texas

- Making Bowls Fly
- Turning a Multi-Axis Vase



“Ready for a change of pace from an average round bowl? Consider adding wings. We’ll explore turning a bowl from a non-standard shape such as a rectangle, parallelogram, or rhombus.”

Keith Tompkins, New York

- Turning the Rose
- Woodturning Form and Design

“I believe the principles of form and design are increasingly important teaching tools. Don’t believe it? This demonstration may just convince you!”

Jacques Vesery, Maine

- Tattoo Me With Texture
- The Hans and Jacques Show
- Concepts in Design

“Through a presentation of several artists’ work, in some cases in retrospect, we will learn how variations and growth help a body of work evolve. This is a great learning tool for anyone working in any medium. It is also an ever-changing presentation as new artists’ work is added to the mix each year.”

Molly Winton, Washington

- Surface Enhancements



“Want to make your turnings stand out? Burn, baby, burn! I’ll take you through the process of pyrographic surface enhancements, from design inspiration to making and using homemade brands.”

Highlights

Don't miss 3 woodturning exhibits

Plan to extend your stay in Louisville an extra day just to take in three exciting woodturning exhibits. Each celebrates woodturning as a craft and an art form from different perspectives.

"20 Years—Still Evolving"

This exhibit at the Kentucky Museum of Art (four blocks from symposium site; 25-cent trolley available) commemorates the AAW's 20th anniversary. The exhibit showcases the evolutionary work of 22 woodturners by displaying a turned piece produced in 1986, another from 1996, and a current piece. See *page 32* for work from Michelle Holzapfel and William Hunter.

"Step Up to the Plate"

A themed exhibition of both juried and invited work opens June 21 at the Louisville Slugger Museum (five blocks from symposium; 25-cent trolley available) with a reception. You'll get a sneak preview of this exhibit in the Summer journal.

"Rude Osolnik—A Collection"

At the Kentucky Museum of Art, you'll see a display of some of the work

The "Step Up to the Plate" exhibit includes "Mighty Casey Has Struck Out" by S. Gary Roberts of Austin, Texas. Gary's whimsical turned piece rotates on a turntable.



created by Rude Osolnik, one of the pioneers of creative woodturning. See *page 30* for several signature pieces.

Other highlights

Instant Gallery

Surround yourself in a room jam-packed with inspiring new work displayed by symposium attendees. In past years, more than 600 member pieces have been on display.

EOG Auction

Join us for the Friday evening auction of donated turnings. All proceeds benefit the Education Opportunity Grants (EOG) program. Last year's auction raised more than \$70,000 for the EOG.

10 Great Reasons to Attend

1. Search out the best dang sanding discs available—you'll find these and everything for your lathe and shop at North America's biggest turning trade show.
2. Watching demos all day makes a woodturner hungry. Wander a few blocks to Fifth and Main, where Jarfi's serves great sea bass and a to-die-for shrimp pasta.
3. You like things that turn, right? Watch the 16-foot-diameter paddlewheel from the deck of the *Belle of Louisville*, a National Historic Landmark.
4. Bring your chapter's calendar! There's no better place to scout out and sign up demonstrators for upcoming AAW chapter demos.
5. Collect woodturner autographs at the "20 Years—Still Evolving" opening night reception on Wednesday, June 21.
6. Big lumber: Check out some world-renowned turning (baseball variety) at the Louisville Slugger Museum.
7. Take a drive to historic Churchill Downs, site of the Kentucky Derby. Yes, the ponies will be running.
8. Lose all sense of time studying incredible pieces in the AAW's Instant Gallery.
9. Ask! Ask! Ask! Dive into the hallways and lunch areas, which are crawling with friendly woodturning experts eager to answer your questions.
10. Hold on tight! Six Flags Kentucky Kingdom features Chang, the world's tallest, longest, and fastest stand-up roller coaster.



Getting to Louisville

Air Travel

Discounted airfares are available through the following airlines. Please contact your travel agent for information and ticket purchases if you plan to fly to Standiford Airport (SDF) in Louisville, Kentucky. Be sure to mention the airline ID numbers so AAW will be properly credited.
AMERICAN AIRLINES code A296AR
NORTHWEST AIRLINES code NM9TQ
UNITED AIRLINES code 537TE
Reservations may also be made through Verene Travel, official travel agent for AAW, at 651-481-4970.

Ground Transportation

From Standiford Airport to the Galt House Hotel & Suites

- Avis Rent A Car Systems has extended a discounted rate for those who want to utilize a rental car. Call 800-331-1600 and use Avis Worldwide Discount number J867085 to receive the discount.
- The Galt House offers prearranged transportation (\$10) with your reservation. Call 502-561-4022 in advance of arrival.

Lodging

Ask for the American Association of Woodturners discount to receive our special rates. Be sure to reserve your room early. All rooms are blocked until May 20. Need a roommate? See the AAW forums.
Galt House Hotel & Suites (host hotel)
140 N. Fourth Street
Louisville, KY 66211
Reservations: 502-589-5200
single/double, \$99
executive single, \$119

Louisville Metro KOA

900 Marriott Drive
Clarksville, IN 47129
800-562-4471
koa.com (listed under Kentucky)
lmkoa@insightbb.com

Directions to the Galt House Hotel & Suites will be mailed with your confirmation package. A detailed demonstration schedule for Thursday, Friday, and Saturday is included in the registration packet on-site or at woodturner.org.